

Test planning with Microsoft Test Manager

Certus User Partner workshop

30 October 2015

Tal Pe'er
Kongsberg Maritime



KONGSBERG





KONGSBERG

History

- Test documents were created and managed using MS-Word
- KM decided to work with TFS and VS package, including MTM
- A few test teams began using MTM, learning on the go and building a method for best way of using the tool



KONGSBERG

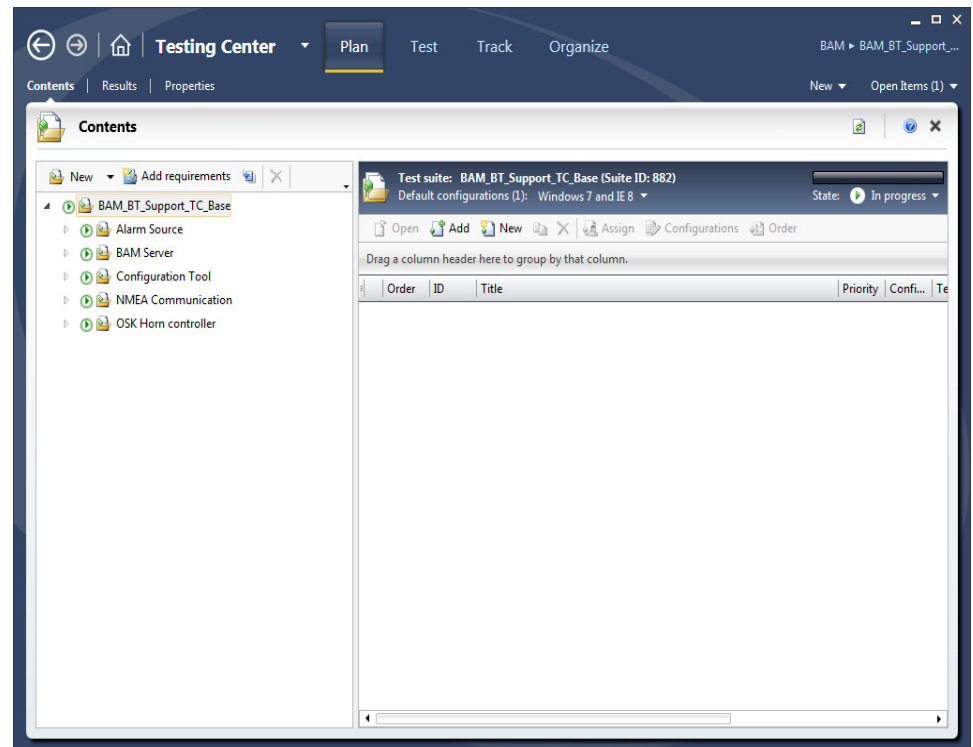
Creating a test plan

- 2 ways of creating a test plan in MTM
 - Test-suite based
 - Manual building the test structure
 - Requirements-based
 - Test connected to requirements in TFS



Test suite base

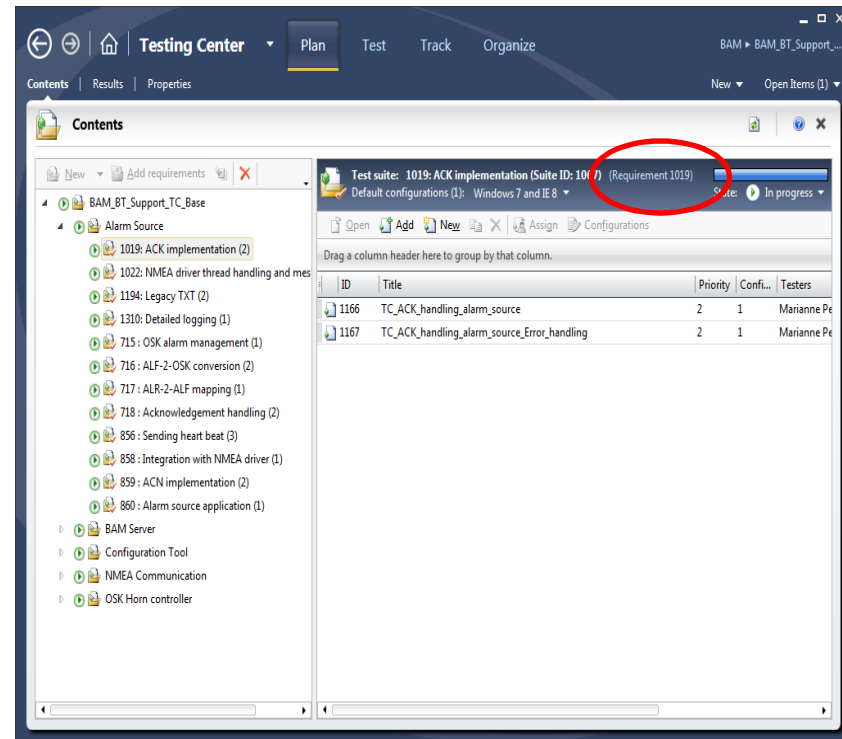
- Create a structure of test suites so it will be easy to find test cases later





Requirements based test suite

- If requirements are located in TFS (as User stories), create requirement bases suites in MTM



User Story 716 - Microsoft Visual Studio

Quick Launch (Ctrl+Q)

FILE EDIT VIEW TEAM TOOLS WINDOW HELP

Attach...

User Story 716 Solution Explorer Team Explorer - Home Class View

Save Work Item

User Story 716 : ALF-2-OSK conversion

Title: ALF-2-OSK conversion

STATUS

Assigned To: Kjell Arne Johansen

State: Active

Reason: New

CLASSIFICATION

Area: BAM\User stories\System requirements\OSK\Alarm Server

Iteration: BAM

PLANNING

Stack Rank: 1981784954 Story Points: 16 Risk:

DETAILS IMPLEMENTATION TEST CASES ALL LINKS ATTACHMENTS STORYBOARDS

Test Cases testing this Story:

New Link to Open in Microsoft Office

ID	work It...	Title	Assigned ...	State	Link Comm...
Tested By (2 items)					
928	Test Case	TC_ALF_2_OSK_Conversion	Marianne ...	Design	
930	Test Case	TC_ALF_2_OSK_Conversion_invalid	Marianne ...	Design	



KONGSBERG

When a new release is made...

- Create a new test plan
- Import the test cases from a test suite base to be executed
- Assign people to the test
- Run the tests from this new test plan
- If updates are made in the new test suite, the test suite base is also updated.



KONGSBERG

Run tests

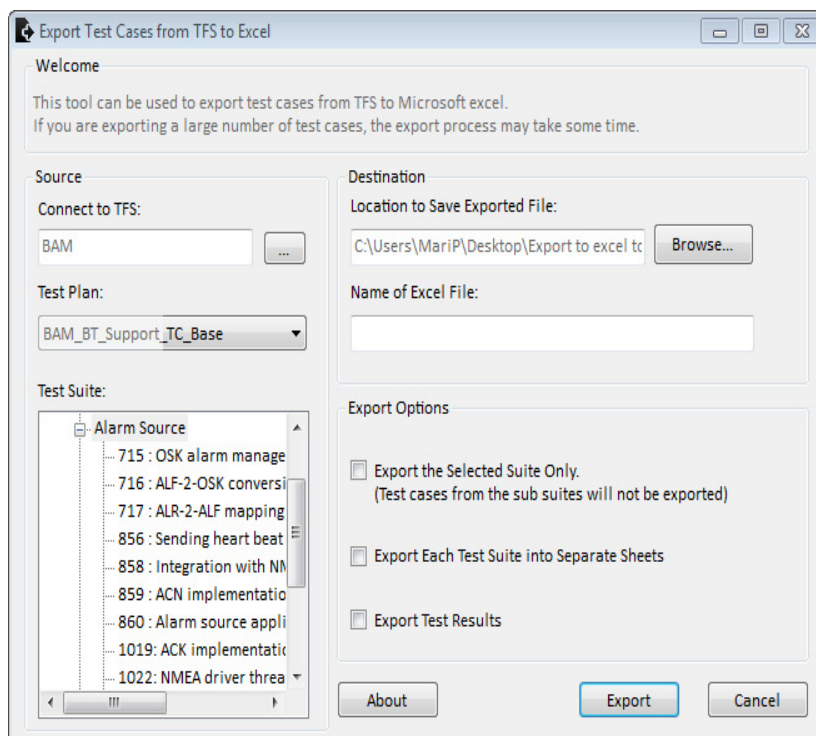
- Select the Test tab in MTM
- Select which test to run and run the test.
- If all steps are ok, the test are ok.
- If a step fails, create a new bug or connect the test case to an existing bug.



KONGSBERG

Task for test manager and test personnel	Can MTM help us with this?	Comment
Create test plan	Yes, mostly	It is possible to select which test cases to run, and assign people to the test.
Create test reports	Yes, mostly	With MTM you can easily make cake diagrams with information about the test results.
Create test cases	Yes	
See which base line the test has been tested on	No	Use an excel sheet to keep the overview
Handle requirements and connect them to test cases	Yes	Connect via visual studio.
Bug verification	Yes	Use Visual studio
Test progression	Yes	Easy to get the overview over passed, failed and not tested tests in the test plans
Connection between failed test cases and related bugs	Yes, but...	When a test step/test is failed, create a new bug, or connect the failed test to an existing bug. The drawback: the bugs needs to be connected to the test case when a step fails, or make a link from the bug and to the test case.

Detailed test report with status of each step



- Need external tool as default reports on TFS or MTM are not good enough
- See <https://tfstestcaseexporttoexcel.codeplex.com/documentation>



KONGSBERG

Our view of MTM

- It is easy to get information on status of execution of tests
- Lack of information on status of test plan and design
- No option to branch test cases



KONGSBERG

KONGSBERG PROPRIETARY - See Statement of Proprietary Information